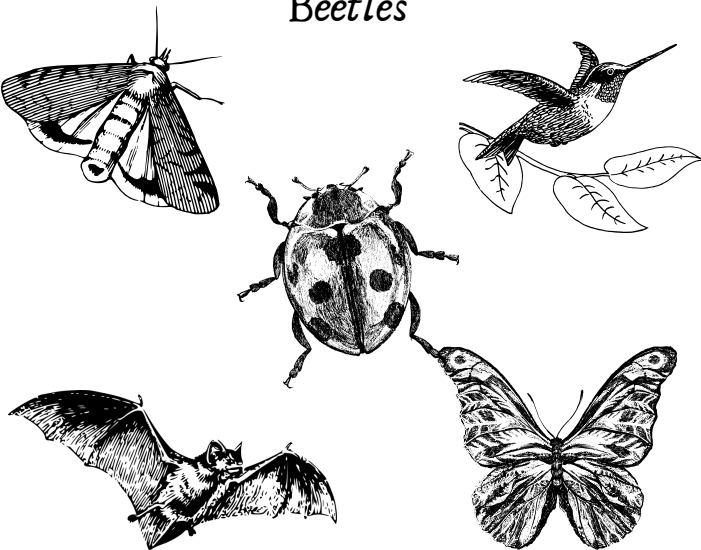


What's happening?

Pollinator populations are at an all-time low. As new land is developed, pollinators lose food sources and habitats.

Pollinators other than the popular Honey Bee

*Moths,
hummingbirds,
bats,
butterflies,
Beetles*



Pollinators

*What's happening
to them, and how
can I help?*

Why are pollinators important?

Pollination is essential to our survival. Pollinators are responsible for 1 out of every 3 bites we eat. Pollinators contribute to complex, interconnected ecosystems that allow a diverse number of species to co-exist.



How can I help pollinators?

One simple way to help pollinators is by planting a pollinator garden. Not only do they look pretty in your yard, they provide habitat and resources vital to the survival of pollinators. Planting a pollinator garden is super easy and has a big impact on helping pollinators thrive.

Plants Pollinators



BEES

*Lilacs, Lavender, Wisteria,
Mint, Sunflowers, Poppies,
Black-Eyed Susan, Honey
Suckle, Golden Rod.*

MOTHS

*Dame's rocket, Fireweed, Flowering
tobacco, Four o'clocks, Gentian,
Heliotrope, Monarda, Petunia.*

BATS

*Night-blooming phlox, Evening
primrose. Fleabane, Moonflowers,
Goldenrod, Nicotiana,
Honeysuckle, Four o'clocks, French
marigolds*

BUTTERFLIES

*Bluestar, Black-Eyed Susan,
Marigolds, Lantana, Phlox,
Blazing Star, Coneflower.*

HUMMINGBIRDS

*Honey Suckle, Bee Balm,
Sage, Lupine, Red Cardinal
Flower, Trumpet Vine.*

*You can use your seeds
almost anywhere. Use
them in your yard,
field, garden, or
anywhere else where you
wish to attract
pollinators!*

*After sowing, lightly compress
your seeds into the soil— no more
than 1/2 inch— to protect them
from birds, wind, etc. The key is
to compress them, but not bury
them. Do not to mow the area
where you want your seeds to
grow.*

**WANT TO LEARN MORE?
VISIT
POLLINATEOURPLANET.COM
& FOLLOW
@POLLINATEOURPLANET
ON INSTAGRAM!**

